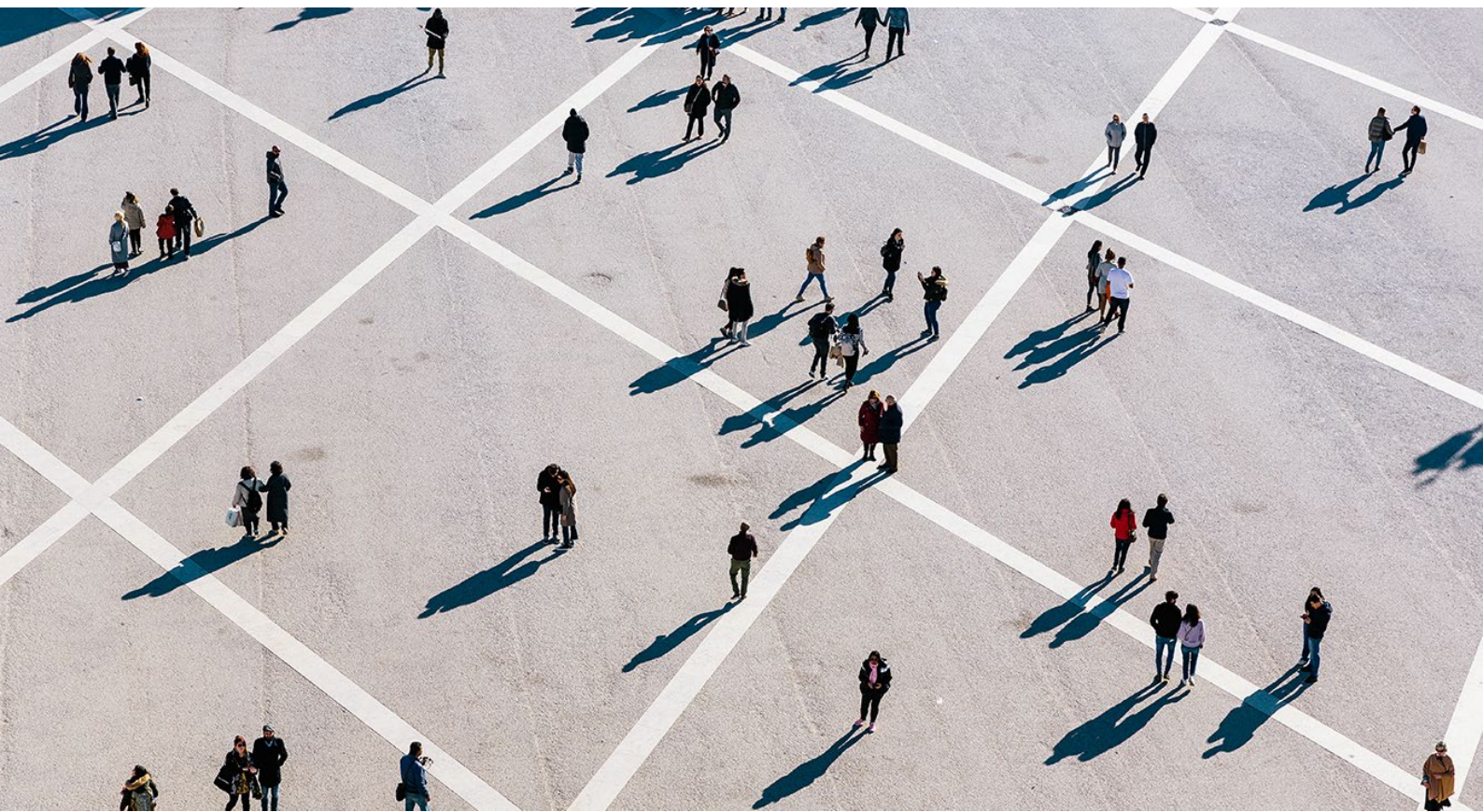


ACCESS ARRANGEMENTS

Fact sheet
St.Gallen, March 2022



Studying with a disability and/or chronic illness

Completing a degree course with a disability and/or chronic illness is a particular challenge. By granting individually adapted measures (access arrangements), the University of St.Gallen enables the students concerned to complete their studies on an equal footing.

Access arrangements

The term “access arrangements” denotes proportionate adaptations of studying and examination conditions which are required to compensate for disadvantages resulting from a disability and thus to guarantee equal opportunities. Degree course requirements will still have to be satisfied if such disadvantages have been compensated for. The adaptations are therefore purely formal and do not affect performance. [Equal despite a disability - InnoWAYtor V4 \(swissuniability.ch\)](https://www.swissuniability.ch)

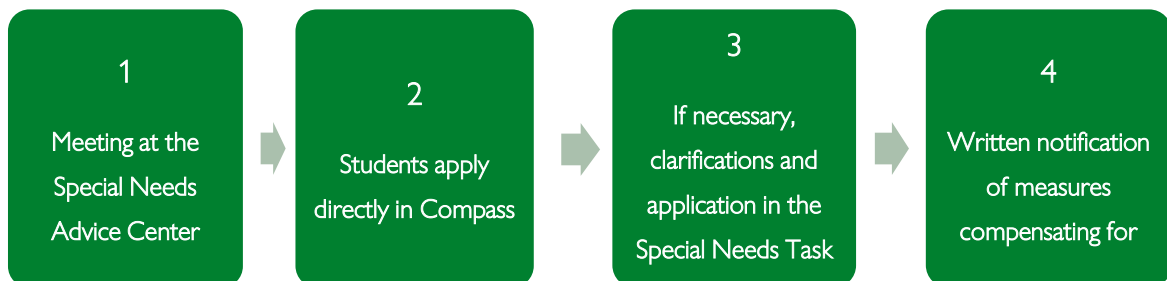
Examples:

Measure	Possible types of disability
Extension of examination time	Dyslexia; AD(H)S; visual impairments; status after brain tumors, brain injuries, etc.
Separate room (if necessary, for sole use)	AD(H)S, autism spectrum disorder, panic disorder, etc.
Seat at the end of a row	Chronic bowel diseases, panic disorder, etc.
Breaks during examinations which are not counted as examination time	Motor disability, chronic bowel diseases, diabetes, etc.
Adaptations to examination documents	Visual impairment, etc.
Examination notebook instead of writing by hand	Multiple sclerosis, motor disability, etc.

Legal basis

With the ban on discrimination in Art. 8(2) of the Federal Constitution and the Disability Discrimination Act, Switzerland has important legal cornerstones on which to base the guarantee of non-discrimination and inclusion in the field of education. These cornerstones are complemented by the cantons’ varying legal norms and, on an international level, by the precepts of the UN Convention on the Rights of Persons with Disabilities (CRPD, particularly Art. 24).

Application process



1 The Special Needs Advice Center discusses the situation of the students concerned with them, evaluates their individual requirements, examines documents provided by medical specialists and recommends measures within the parameters of the University's regulations.

2 If these are "simple" access arrangements such as formal adaptations to examinations, students apply for these measures directly in Compass.

3 In complex situations, the Special Needs Advice Center clarifies additional aspects relevant to the student's studies in the Special Needs Task Force (specialist group). The decision concerning adaptations to studies is incumbent on the specialist group.

4 All the approved access arrangements granted by the Competence Center Planning & Examinations in writing (signature: Dean of Studies & Academic Affairs).

Organisation and implementation of the measures

The implementation of the individually approved access arrangements takes its bearings from the written notification which students receive on application.

- *Central examinations:*
Central implementation by the Competence Center Planning & Examinations.
- *Decentral examinations:*
Decentral implementation by the faculty members in charge of the examinations. Students themselves inform the faculty members in charge of the examinations at least two weeks before the relevant examination date by e-mail (including presentation of the notification).
- *Admission test:*
Implementation by the Competence Center Planning & Examinations.
- *Integration week:*
Implementation by those in charge of the integration week.

Application Deadlines

Examination	Examination date	Application date
Admission test	Wednesday CW07	Friday CW 2
	Wednesday CW 28	Friday CW 22
Integration week	CW 22	Friday CW 17
	CW 36	Friday CW 32
Decentral examinations	Gemäss Informationen der Dozierenden	Friday CW 46 (AS)
		Friday CW 16 (SpS)
Central examinations	According to examination plan	Friday CW 46 (AS)
		Friday CW 16 (SpS)
Accountancy examination	January	Friday CW 46
	March	Friday CW 9
	June	Friday CW 16

Contact

Diversity & Inclusion
 Special Needs
 Rosenbergstrasse 51
 9000 St.Gallen
specialneeds@unisg.ch

Competence Center Planning & Examinations
 Access arrangements
 Dufourstrasse 50
 9000 St.Gallen
nachteilsausgleich@unisg.ch